

Signing in to MNP parent guides

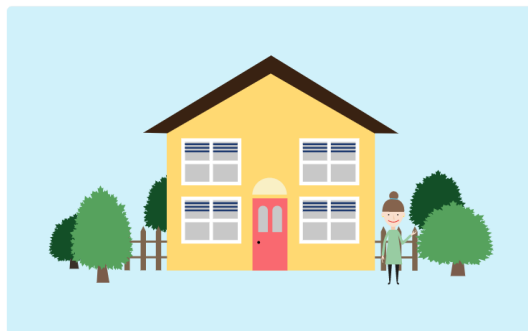
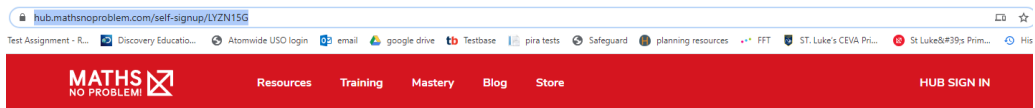
1- Click the link you received via text message.

Sign up for Parent Guides by following this link and entering this access code.

Link: <https://hub.mathsnoproblem.com/self-signup/LYZN15G>

Access Code: QRKKVBJ

2- Click create an account



Welcome! It's good to see you.

Parent Guides is waiting for you. Sign in, or create a new account with your access code.

Sign In

Create an Account


3- Enter the code you were given

Get Started With Parent Guides

Enter your access code

Did you receive an access code from your child's teacher? Enter it below to continue creating your account.

Access Code



Continue

Cancel

4- Enter your details

Let's get you set up!

Before you get started with Parent Guides, have a look at our [Privacy Policy](#) and agree to our [Terms & Conditions](#) below.

First Name Last Name

Email

You must accept the GDPR Terms & Conditions to use Parent Guides.

I agree to the Terms & Conditions
 Opt-in to our email newsletter

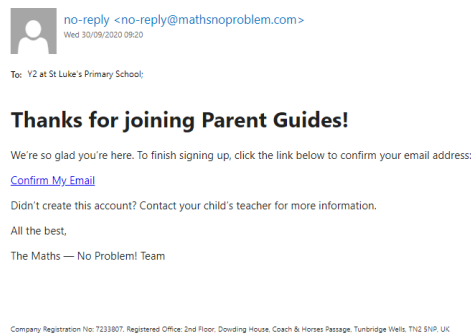
Create Your Password

Enter a password you'll remember. Unlike boring old passwords, your password can include spaces, capital letters, numbers, or special characters. Make sure it's 10-128 characters, and isn't a common word or phrase that someone could easily guess.

New password


Re-enter new password

5- Check your email and confirm



6 – Access the guides!

Parent Guides: England





New around here?

Check out our Teaching Support Manual to get the most out of Parent Guides. If you need assistance, please contact your child's classroom teacher

[View Teaching Support Manual](#)

Parent Guides

Year 4

	Textbook 4A > Workbook 4A >
	Textbook 4B > Workbook 4B >