



St Luke's News

A Christian school that serves a diverse community and works in partnership with parents to develop the whole child.

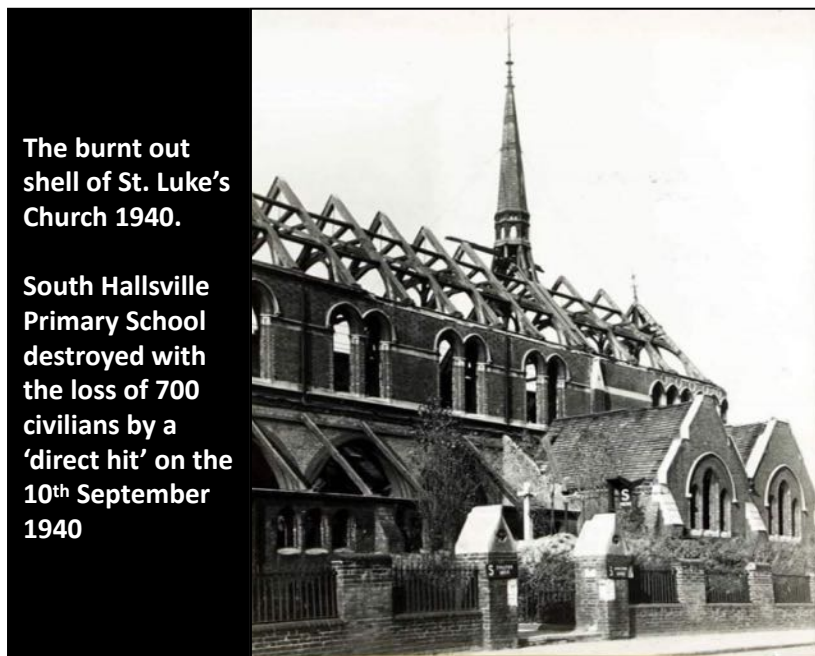


11th November 2023

Dear Parents & Carers,

Friday saw one of the most important services of the year at St Luke's as we remembered those who had given their lives for the freedom of others in wars from 1914 to the present day and those innocent civilians in our own community who suffered such losses in the Blitz in 1940 which centred around the docks that dominated where we live today.

We discussed the conflicts in Ukraine, Israel and Gaza and talked of the innocent people who are so often casualties in modern wars. It produced some wonderful poetry from our Y6s, below is an example:



The burnt out shell of St. Luke's Church 1940.

South Hallsville Primary School destroyed with the loss of 700 civilians by a 'direct hit' on the 10th September 1940



And he shall judge among the nations, and shall rebuke many people: and they shall beat their swords into plowshares, and their spears into pruninghooks: nation shall not lift up sword against nation, neither shall they learn war any more. (Isaiah 2:4).

Eternal Loss

Bombs decimate homes.
The ringing pierces my ears.
Sadness in our hearts.
I hate this.
I despise this.
Families are being ripped apart.
Why won't they bury the hatchet?

Ash is what I see.
Sorrow is my only feeling.
A relentless fight for peace.
I hate this.
I despise this.
Inconsolable people wish for their end.
We are all broken-hearted.

Scattered shards of glass.
Only collapsing buildings.
The thought of death engulfs my mind.
I hate this.
I despise this.
More tears than blood.
We are all in the trenches.

Nabil Iddrisu Y6, November 2023



Our Y6s also laid a wreath from our whole community at the memorial in the old St. Luke's Church building and our service finished with the prayer below:

A prayer of commemoration for the fallen

Father of all, remember your holy promise,
and look with love on all your people, living and departed.
On this day we especially ask that you would hold forever

all who have suffered during war, those who returned scarred by warfare, those who waited anxiously at home, and those who returned wounded, and disillusioned; those who mourned, and those communities that were diminished and suffered loss. We also remember those suffering loss today in wars in Ukraine, Israel & Gaza and conflicts all over the world.

Remember too those who acted with kindly compassion, those who bravely risked their own lives for their comrades, and those who in the aftermath of war, worked tirelessly for a more peaceful world. And as you remember them, remember us, O Lord; grant us peace in our time and a longing for the day when people of every language, race, and nation will be brought into the unity of Christ's kingdom. This we ask in the name of the same Jesus Christ our Lord. **Amen.**

More imagination at St. Luke's

This week Y6 also looked at Biomimicry with the Institute of Imagination. Biomimicry comes from the combining of two terms, bio referring to life and mimicry is imitating. They took some features of living things and used them to design a piece of architecture to mimic some unique animal features to benefit us as humans.

Animal: Bird

Feature(s): bright colours, flexible wings, and chirping

Building: Recreational - swimming pool



This group designed a building and swimming pool, thinking about how to attract customers so we incorporated the colourful features of a bird to make it bright and welcoming. We also thought about how birds attract each other using sound and also used the flexible nature of their wings to create a mobile roof.

Message from London Borough of Newham - Childcare Choices: Get the help that fits your family, so you can juggle work and life

Thousands of families could be saving money on their childcare costs. But some simply don't know what support they might be eligible for. The [Childcare Choices website](#) brings together all the existing childcare offers in one place, so parents can get the help that fits their family. This could be through Tax-Free Childcare, 30 Hours Childcare, or Universal Credit Childcare. Some families might be eligible to use more than one childcare scheme together and get the most out of it.

And from next year even more help is on the way:

- From **April 2024**, eligible working parents in England with children aged 2 will have access to 15 hours childcare (available from the term after the child's 2nd birthday).
- From **September 2024**, the 15 hours childcare offer will be expanded to eligible working parents in England with children between 9 and 23 months old (available from the term after the child turns 9 months).
- From **September 2025**, eligible working parents in England with children between 9 months up to school

Newham London

WE ARE CARING. WE ARE NEWHAM.

TO TAKE PART SIMPLY COMPLETE OUR ONLINE SURVEY AT www.newham.gov.uk/childcareparentsurvey2023

DO YOU HAVE CHILDREN AGED 0-14 YEARS? HELP US TO HELP YOU!

We want to know about your childcare needs so we can plan services that will work for you and your family. We welcome your views and invite you to please complete a short survey, the details of which will be kept strictly confidential. Everyone that completes the survey will be entered into a free prize draw to be in with a chance of winning £100 of shopping vouchers.

The closing date for entries is 5pm on **3 DECEMBER 2023**. The survey will take about 10 minutes to complete. Share your knowledge. When completing the survey, you can also request information on:

- free 15 hours for two-year olds
- free 30 hours for working parents with three and four-year olds
- the new expansion of the funded early education scheme
- plans to develop wraparound care for primary school children
- help with childcare costs
- childcare providers for children aged 0-14 in your area.

FREE PRIZE DRAW!

WE ARE NEWHAM.

age will have access to 30 hours childcare. Support is also expanding for primary-school aged children – from September 2024, parents are expected to see an expansion in the availability of childcare in their local area before and after school, between 8am and 6pm, also known as ‘wraparound care’. Don’t miss out on getting the support you are entitled to. Visit the [Childcare Choices website](#) to check what offer you might be eligible for and sign up to a newsletter to get the latest updates about the childcare support expansion.

A link to information on our webpage is here: [Newham Families Advice and Support | PARENT SURVEY 2023](#)

To access the questionnaire click on this link: www.newham.gov.uk/childcareparentsurvey2023

Help us to help you! Take the survey now!

Other news...

The Y5s with their *Bikeability* certificates from last week’s cycling

Join YR next week for a phonics lesson (below).



A poster for a 'Stay and Play Phonics' lesson. At the top, it says 'STAY AND PLAY PHONICS' in large, bold letters. Below this is a circular logo with an owl and the text 'Little Wandle LETTERS AND SOUNDS REVISED'. The main text on the poster reads: 'JOIN US FOR A PHONICS LESSON IN RECEPTION. THIS WILL HELP GIVE AN INSIGHT ON HOW PHONICS IS TAUGHT, AND HOW YOU CAN SUPPORT YOUR CHILD AT HOME.' Below this, in an orange box, it says 'ON TUESDAY 14TH NOVEMBER @9:00AM'. At the bottom, it says 'WE LOOK FORWARD TO SEEING YOU ALL!' and 'IF YOU HAVE ANY QUESTIONS, PLEASE SPEAK TO MISS YETER'. There is a small logo for 'ST. LUKE'S' and a row of colored pencils at the bottom right.



Congratulations to our Special *After School Award* winner for being such a fantastic role model to all!

Year 3 Puppetry Workshop

Our Y3s had a puppetry workshop from a puppeteer who has worked all round the world with some master puppeteers and shared the secrets she has learnt with the children. They watched some of her work and then learnt to move like puppets the paper we all throw out from Amazon deliveries.





The Y3s also did so **Geography** fieldwork in our local area including looking at Canning Town from above!

Staying Safe - What Is Snapchat's Snap Map?

Snapchat Snap Map is an interactive map that some young people use to share their location with friends. You can also see friends when they share their location with you. If your friends have integrated their Bitmoji account with Snapchat, their Bitmoji characters appear on the map at their location.

What Is the danger of Snapchat Live Location?

If you as a parent do not know your child has put this on then you will not know that others who may have 'befriended' your child can also see where your child is. *Live Location* shares your location status even if you've closed your Snapchat app.

Happy Birthdays



Upcoming Dates

Click on the link below for all the term dates this year:

[Final academic-calendar-2023-2024 \(st-lukes.newham.sch.uk\)](https://st-lukes.newham.sch.uk)

November

13th Anti-Bullying week

13th – 24th Afternoons - Y6 Swimming lessons at the Olympic Swimming Pool

14th YR Phonics lesson for parents

14th KS2 trip to BFI to see French film

15th Y5 loi workshop

17th Y5 Dodgeball competition at Rokeby Secondary School

20th-24th Parent Meetings week

28th Google online safety assembly – KS2

29th Architecture in Schools awards – Tower Hamlets 5-7pm Parents invited to attend with their Y4 child

December

1st Christmas pudding Assembly 9am

1st PM KS2 Debate – Parents invited

5th Y3 Build a New World visit

7th & 8th YN Home visits for new children

11th Bishop Lynne visits St. Luke's 9am Parents invited

12th PM EYFS Nativity – Parents invited

13th Choir singing Christmas Carols at Waitrose to raise money for River Foodbank

14th PM Little Red Riding Hood visiting Pantomime

15th AM Christmas Music assembly

15th PM KS1 Christmas show – Parents invited

18th Dec. 9am Christingle Service Parents Invited

18th Dec PM Class Christmas parties

19th Dec. End of Term Awards – Parents invited

19th Dec. School closes for Christmas Holiday at 1pm – school re-opens normal time

Thursday the 4th January 2024

Have a peaceful weekend

Matt Hipperson HT

Have a good weekend



Matt Hipperson
Head Teacher